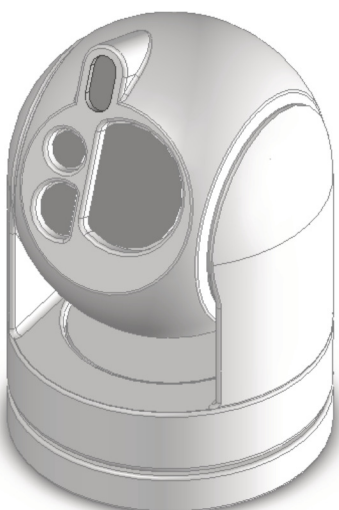


DioWarriors™

WEAPON SYSTEMS

GYROCAM ASSEMBLY GUIDE



VERSION

1

SERIES

A

SCALE

1/18



www.diowarriorsstore.com



www.facebook.com/OfficialDiowarriorscom



www.instagram.com/diowarriorsstore

Thank You!

And again thank you for purchasing this DioWarriors kit. Unlike other brands, a DioWarriors item is more like a model kit than a typical toy – it may require painting, assembly, and sometimes glue.

We are always striving to improve the quality of our products so there might be slight differences with this assembly guide and the physical kit. Please check online at the DioWarriors Store for any update, replacement part, and other information. Your kit may also have pre-assembled parts while this guide may show those parts as being unassembled.

How-To Assemble: All parts of the kit can be assembled without cutting. Adjustments can be achieved by sanding. If a part is too tight to assemble try sanding it slightly until it fits.

This kit may also require glue to completely assemble. Although some parts may fit tight enough without glue, it is advised to use glue to build a secure assembly.

Gluing Tips: Superglues work well with this kit. Please take caution when gluing near transparent parts as super glue can leave a vapor trail. A bit of masking tape can shield against the vapor. When using model cement, please allow extra time for the glue to fully dry.

As always, please follow the safety and usage guidelines for whatever glue you use. Always glue with proper ventilation.

Smoothing and Layer Lines: It is the nature of 3D printing to make an object by fusing material layer-by-layer. The process generates layer lines. There are a number of ways to reduce layer lines--sanding, surface priming, and specialty plastics. Please visit the DioWarriors Store for additional information.

Painting: Plastic parts can be painted using spray paint or brush paint for model kits. The plastics have been tested with acrylic, enamel, and lacquer paints. Pre-paint washing is not required. Do not use alcohol on specialty plastics that have been post treated for smoothing the layer lines. Avoid alcohol on acrylic parts. Always follow the safety and usage guidelines for paint.

Splinter Warning: Take caution with wood parts and sand away splinters. Some plastics may also have splinters, especially if the plastic surface is rough.

Ages 15+

Warning:

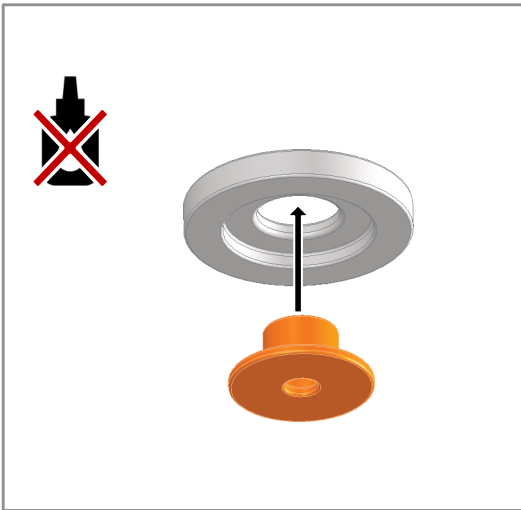
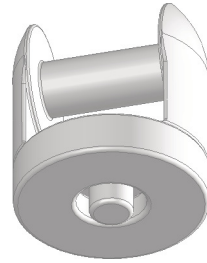
Choking Hazard - Small parts. Not for children under 3 years. This product is intended for ages 15 years on up.



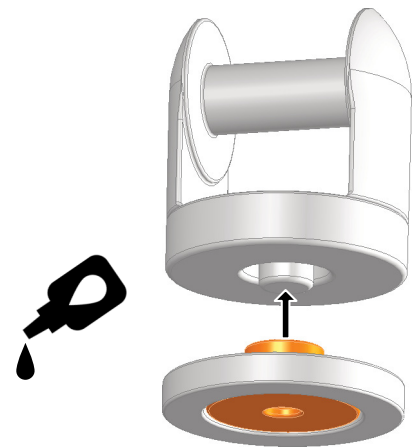
Do Not Glue

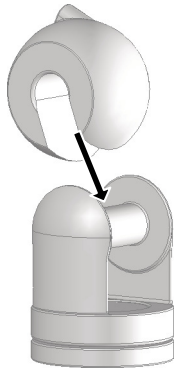


Apply Glue

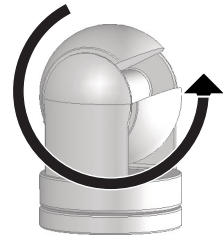
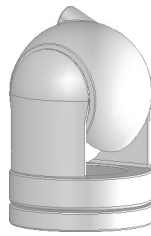


Glue only inside wall.

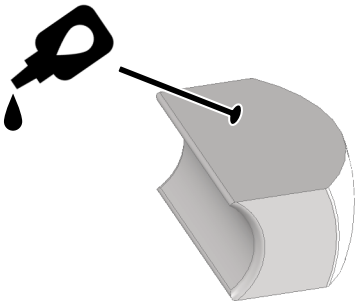




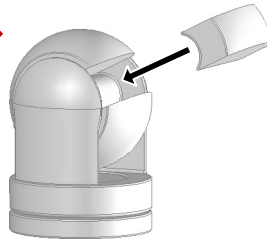
Do not glue to axle.



Do not force rotation.



Glue only to side.



Do not glue to axle.
Do not glue to sides.

