

CAPTAIN'S CHAIR

VERSION

1

ASSEMBLY GUIDE

SCALE

1/18

Thank you for purchasing the Captain's Chair 1:18 scale model kit from DioWarriors. We are always striving to improve the quality of our products, so there might be slight differences with the assembly guide and the physical kit. Please check online at the DioWarriors Store for any update, replacement part, and other information.

How-To Assemble: All parts of the kit can be assembled without cutting. Instead, physical adjustments can be achieved by sanding. If a part is too tight to assemble, try sanding it slightly until it fits.

This model requires gluing to fully assemble. Superglue works well for 3D Printed parts. Model cement may also be used, but will require longer curing time.

We can use your help. We are a very small company. If you enjoy this model, please consider sharing photos of it. Word-of-mouth helps us a lot. Every purchase goes to improving machines, which in turn helps us produce larger, and better models.

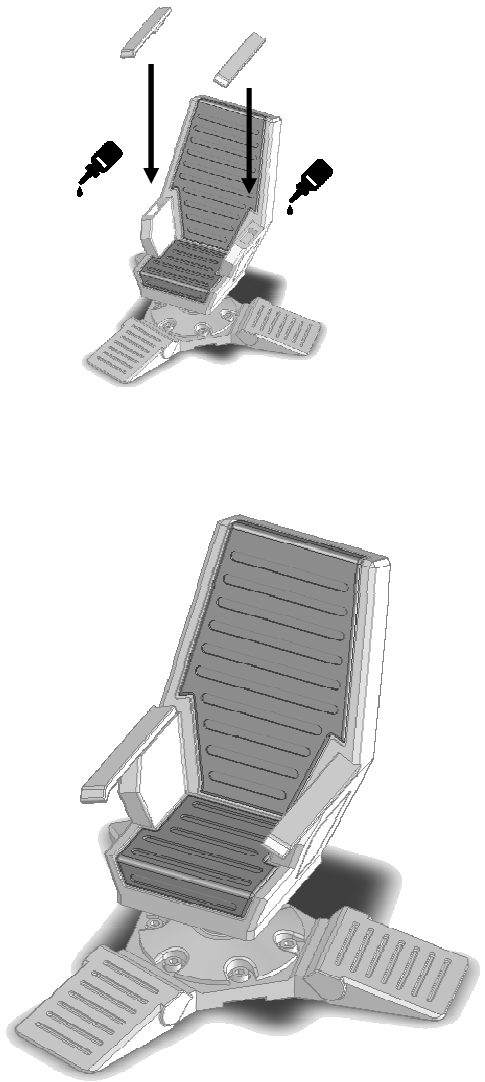


Apply glue.

Scan the QR Code to load the Captain's Chair page in your phone's browser.

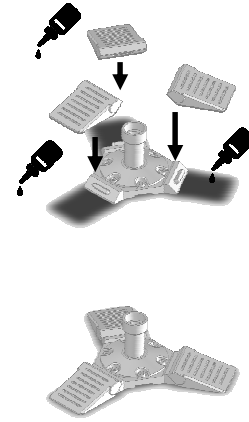


Find additional models and tips at the DioWarriors Store web site!



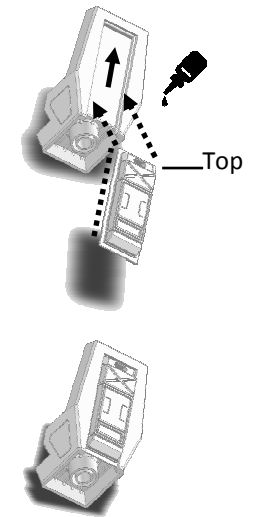
STEP

1



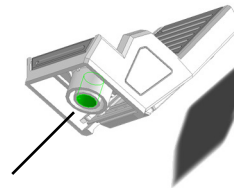
STEP

2



STEP

3



Two rings, the Inner is optional if present.

